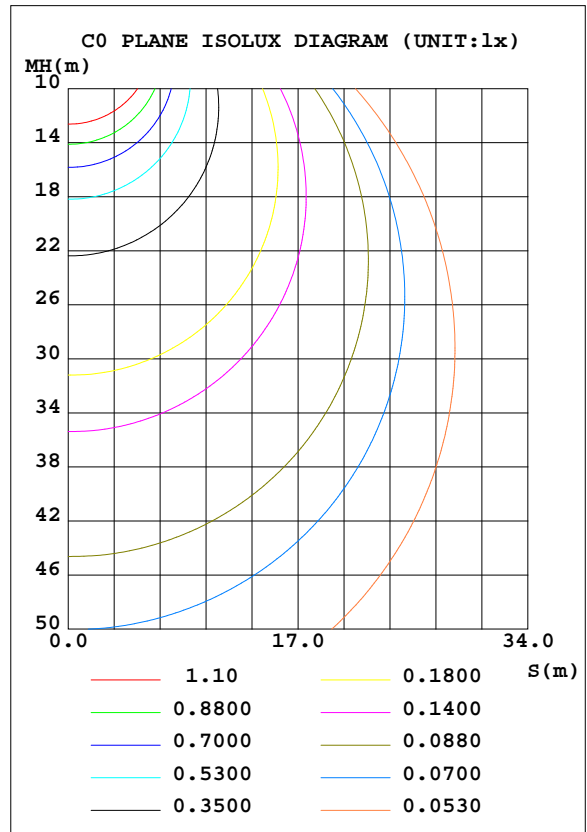
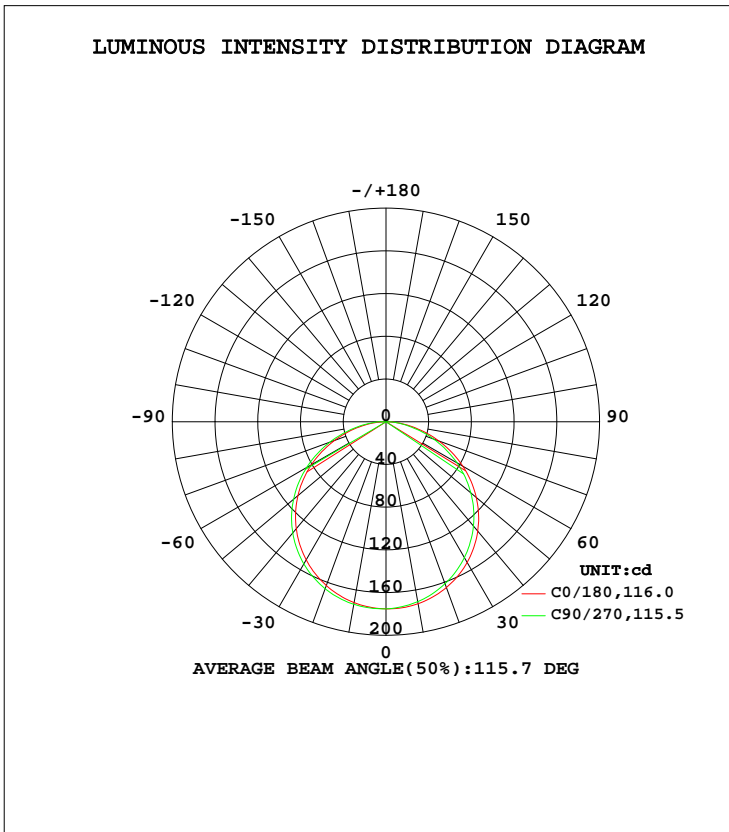


LUMINAIRE PHOTOMETRIC TEST REPORT

Test:U:24.00V I:0.3025A P:7.260W PF:0 Lamp Flux:526.489x1 lm		
NAME: 01-F0030-AWWN-041	TYPE:	WEIGHT:
SPEC.:	DIM.:	SERIAL No.:
MFR.: EVERFINE	SUR.:0.01*1.0*0.002	Shielding Angle:

DATA OF LAMP		PHOTOMETRIC DATA Eff: 72.52 lm/W			
MODEL	GL-24-F003N-A	I _{max} (cd)	175.3	S/MH(C0/180)	1.27
NOMINAL POWER(W)		LOR(%)	100.0	S/MH(C90/270)	1.30
RATED VOLTAGE(V)		TOTAL FLUX(lm)	526.49	η UP, DN(C0-180)	0.4,48.6
NOMINAL FLUX(lm)	526.489	CIE CLASS	DIRECT	η UP, DN(C180-360)	0.4,50.7
LAMPS INSIDE	1	η up(%)	0.7	CIBSE SHR NOM	1.25
TEST VOLTAGE(V)		η down(%)	99.3	CIBSE SHR MAX	1.35



C Range: 0 - 360DEG
 C Interval: 22.5DEG
 Test Speed: HIGH
 Temperature:25.3DEG
 Operators:DAMIN
 Test Date:2017-03-29

γ Range: 0 - 180DEG
 γ Interval: 1.0DEG
 Test System:EVERFINE GO-2000B_V1 SYSTEM V2.0.351
 Humidity:65.0%
 Test Distance:9.660m [K=1.0000]
 Remarks:

ZONAL FLUX DIAGRAM

ZONAL FLUX DIAGRAM:

γ	C0	C45	C90	C135	C180	C225	C270	C315	γ	Φ zone	Φ total	%lum, lamp
10	173.0	171.8	171.0	171.6	172.0	173.1	173.6	173.2	0- 10	16.59	16.59	3.15,3.15
20	165.3	162.9	161.5	162.6	163.3	165.4	166.5	165.7	10- 20	47.70	64.30	12.2,12.2
30	152.1	148.8	146.8	148.3	149.4	152.4	153.8	152.6	20- 30	72.83	137.1	26,26
40	133.6	129.7	127.4	129.3	130.7	134.3	135.9	134.3	30- 40	88.73	225.9	42.9,42.9
50	110.4	106.3	103.8	106.0	107.7	111.6	113.0	111.0	40- 50	93.21	319.1	60.6,60.6
60	82.95	79.01	76.64	79.07	80.73	84.70	85.83	83.47	50- 60	85.36	404.4	76.8,76.8
70	52.63	49.18	47.46	49.97	51.25	54.94	55.87	53.08	60- 70	66.09	470.5	89.4,89.4
80	22.85	20.71	19.58	22.26	22.73	25.75	26.47	23.73	70- 80	39.16	509.7	96.8,96.8
90	1.596	2.545	3.379	3.990	1.593	3.693	4.950	3.588	80- 90	12.93	522.6	99.3,99.3
100	0.1822	0.4108	0.3496	0.3654	0.2584	0.3037	0.2431	0.3033	90-100	1.148	523.8	99.5,99.5
110	0.2581	0.3340	0.3188	0.3492	0.3795	0.3495	0.3492	0.3494	100-110	0.3386	524.1	99.5,99.5
120	0.4702	0.4550	0.4557	0.4705	0.5163	0.4708	0.4254	0.4707	110-120	0.3894	524.5	99.6,99.6
130	0.5160	0.5160	0.5310	0.5160	0.6528	0.6073	0.5618	0.5772	120-130	0.4575	524.9	99.7,99.7
140	0.5769	0.5920	0.6221	0.6377	0.7135	0.6982	0.6379	0.6529	130-140	0.4632	525.4	99.8,99.8
150	0.7282	0.6832	0.7136	0.7135	0.8196	0.7743	0.7440	0.7442	140-150	0.4322	525.8	99.9,99.9
160	0.7287	0.7288	0.7440	0.7592	0.8501	0.8351	0.8349	0.8501	150-160	0.3507	526.2	99.9,99.9
170	0.7894	0.7895	0.7895	0.7895	0.8501	0.8503	0.8806	0.8806	160-170	0.2262	526.4	100,100
180	0.8198	0.9110	0.8958	0.8199	0.8349	0.8199	0.9110	0.8806	170-180	0.0787	526.5	100,100
DEG	LUMINOUS INTENSITY:cd									UNIT:lm		

Conical surface Flux(90deg): 272.67 lm

%lum = 51.8%
%lamp = 51.8%

Conical surface Flux(120deg): 404.42 lm

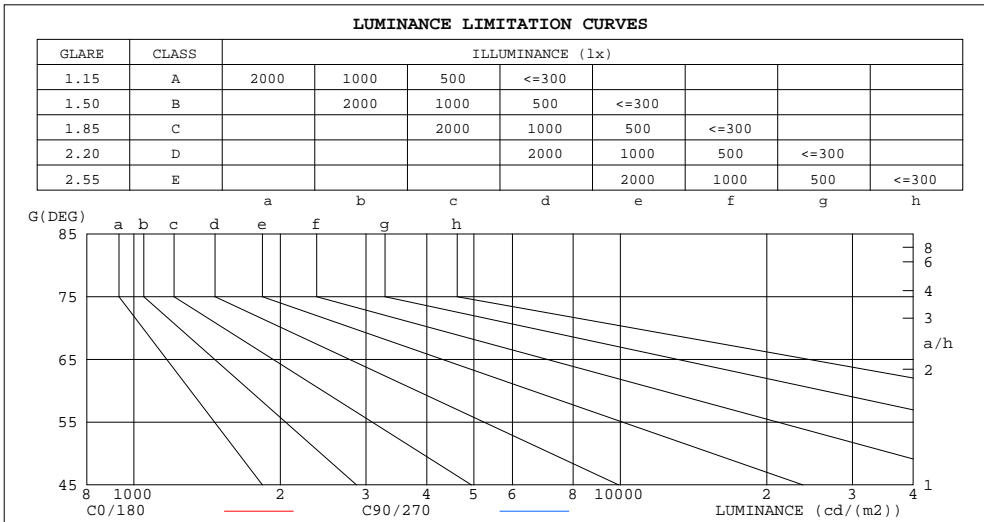
%lum = 76.8%
%lamp = 76.8%

C Range: 0 - 360DEG
C Interval: 22.5DEG
Test Speed: HIGH
Temperature:25.3DEG
Operators:DAMIN
Test Date:2017-03-29

γ Range: 0 - 180DEG
γ Interval: 1.0DEG
Test System:EVERFINE GO-2000B_V1 SYSTEM V2.0.351
Humidity:65.0%
Test Distance:9.660m [K=1.0000]
Remarks:

LUMINANCE LIMITATION CURVES

Test:U:24.00V I:0.3025A P:7.260W PF:0 Lamp Flux:526.489x1 lm		
NAME: 01-F0030-AWWN-041	TYPE:	WEIGHT:
SPEC.:	DIM.:	SERIAL No.:
MFR.: EVERFINE	SUR.:0.01*1.0*0.002	Shielding Angle:



LUMINANCE cd/(m2)		
G(DEG)	C0/180	C90/270
85	5921999	5413678
80	6579997	5639008
75	7223074	6360524
70	7696286	6939063
65	8045072	7347842
60	8296523	7664798
55	8470024	7894268
50	8589177	8074192
45	8670740	8208038

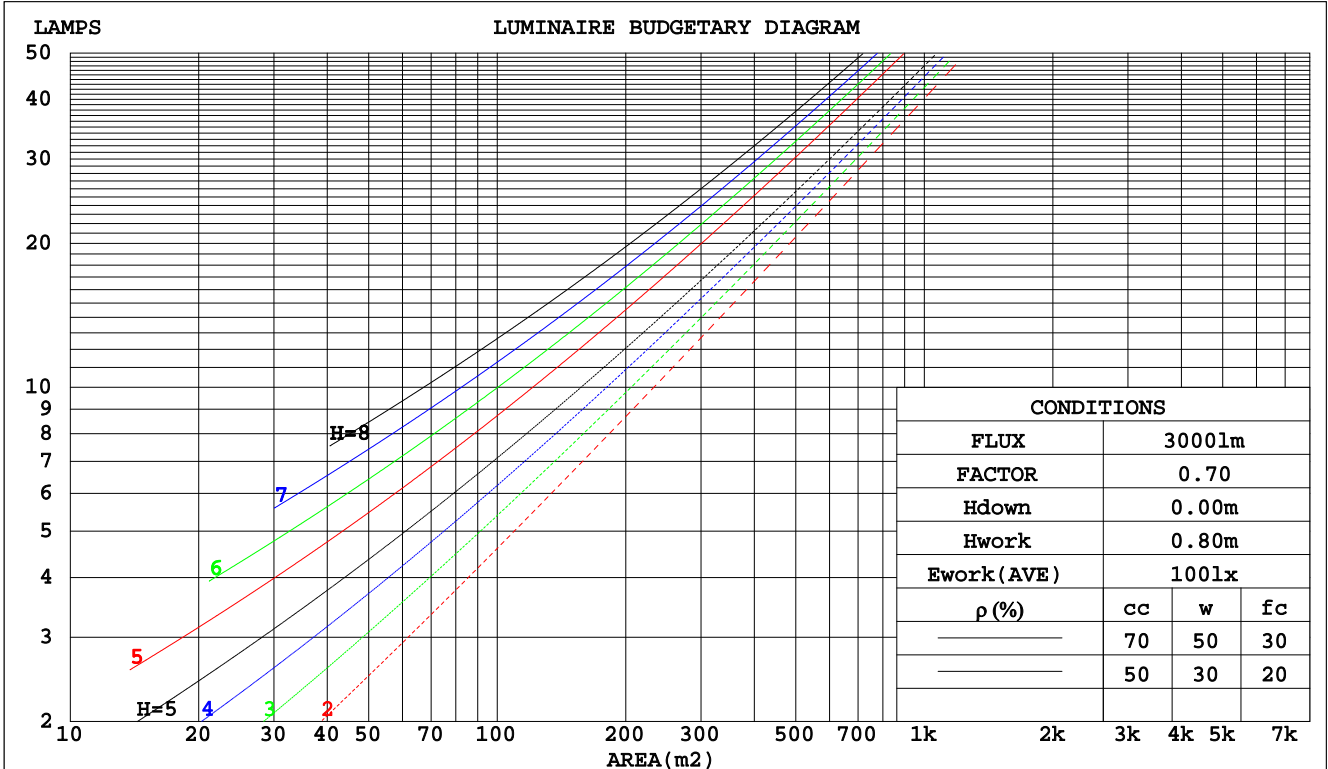
C Range: 0 - 360DEG
 C Interval: 22.5DEG
 Test Speed: HIGH
 Temperature:25.3DEG
 Operators:DAMIN
 Test Date:2017-03-29

γ Range: 0 - 180DEG
 γ Interval: 1.0DEG
 Test System:EVERFINE GO-2000B_V1 SYSTEM V2.0.351
 Humidity:65.0%
 Test Distance:9.660m [K=1.0000]
 Remarks:

CU AND LUMINAIRE BUDGETARY ESTIMATE DIAGRAM

Test:U:24.00V I:0.3025A P:7.260W PF:0 Lamp Flux:526.489x1 lm		
NAME: 01-F0030-AWWN-041	TYPE:	WEIGHT:
SPEC.:	DIM.:	SERIAL No.:
MFR.: EVERFINE	SUR.:0.01*1.0*0.002	Shielding Angle:

pcc	80%			70%			50%			30%			10%			0
	50%	30%	10%	50%	30%	10%	50%	30%	10%	50%	30%	10%	50%	30%	10%	0
pw																
pfc	20%			20%			20%			20%			20%			0
RCR	RCR:Room Cavity Ratio															
	Coefficients of Utilization(CU)															
0.0	1.19	1.19	1.19	1.16	1.16	1.16	1.11	1.11	1.11	1.06	1.06	1.06	1.01	1.01	1.01	.99
1.0	1.03	.99	.95	1.01	.97	.93	.96	.93	.90	.92	.90	.87	.89	.86	.84	.82
2.0	.90	.83	.77	.88	.81	.76	.84	.79	.74	.81	.76	.72	.77	.74	.70	.68
3.0	.78	.70	.63	.77	.69	.63	.74	.67	.62	.71	.65	.60	.68	.63	.59	.57
4.0	.69	.60	.54	.68	.60	.53	.65	.58	.52	.63	.57	.51	.61	.55	.51	.48
5.0	.62	.53	.46	.61	.52	.46	.58	.51	.45	.56	.50	.44	.54	.49	.44	.42
6.0	.56	.47	.40	.55	.46	.40	.53	.45	.39	.51	.44	.39	.49	.43	.39	.36
7.0	.50	.41	.35	.49	.41	.35	.48	.40	.35	.46	.40	.34	.45	.39	.34	.32
8.0	.46	.37	.31	.45	.37	.31	.44	.36	.31	.42	.36	.31	.41	.35	.30	.29
9.0	.42	.34	.28	.41	.34	.28	.40	.33	.28	.39	.32	.28	.38	.32	.27	.26
10.0	.39	.31	.25	.38	.31	.25	.37	.30	.25	.36	.30	.25	.35	.29	.25	.23



C Range: 0 - 360DEG
 C Interval: 22.5DEG
 Test Speed: HIGH
 Temperature: 25.3DEG
 Operators: DAMIN
 Test Date: 2017-03-29

γ Range: 0 - 180DEG
 γ Interval: 1.0DEG
 Test System: EVERFINE GO-2000B_V1 SYSTEM V2.0.351
 Humidity: 65.0%
 Test Distance: 9.660m [K=1.0000]
 Remarks:

WEC AND CCEC

Test:U:24.00V I:0.3025A P:7.260W PF:0 Lamp Flux:526.489x1 lm		
NAME: 01-F0030-AWWN-041	TYPE:	WEIGHT:
SPEC.:	DIM.:	SERIAL No.:
MFR.: EVERFINE	SUR.:0.01*1.0*0.002	Shielding Angle:

ρcc	80%			70%			50%			30%			10%			0
ρw	50%	30%	10%	50%	30%	10%	50%	30%	10%	50%	30%	10%	50%	30%	10%	0
ρfc	20%			20%			20%			20%			20%			0
RCR	RCR:Room Cavity Ratio						Wall Exitance Coefficients(WEC)									
0.0																
1.0	.319	.182	.058	.312	.178	.057	.298	.171	.055	.286	.165	.053	.274	.159	.051	
2.0	.298	.163	.050	.291	.161	.049	.279	.155	.048	.268	.150	.047	.258	.146	.046	
3.0	.275	.146	.044	.269	.144	.043	.258	.140	.042	.248	.136	.042	.239	.132	.041	
4.0	.253	.131	.039	.248	.130	.038	.238	.126	.038	.229	.123	.037	.221	.120	.037	
5.0	.233	.119	.034	.229	.117	.034	.220	.115	.034	.212	.112	.033	.205	.109	.033	
6.0	.216	.108	.031	.212	.107	.031	.204	.105	.030	.197	.102	.030	.190	.100	.030	
7.0	.201	.099	.028	.197	.098	.028	.190	.096	.028	.184	.094	.027	.178	.092	.027	
8.0	.187	.091	.026	.184	.091	.026	.178	.089	.025	.172	.087	.025	.167	.086	.025	
9.0	.175	.085	.024	.172	.084	.024	.167	.083	.023	.162	.081	.023	.157	.080	.023	
10.0	.165	.079	.022	.162	.078	.022	.157	.077	.022	.152	.076	.022	.148	.074	.021	

ρcc	80%			70%			50%			30%			10%			0
ρw	50%	30%	10%	50%	30%	10%	50%	30%	10%	50%	30%	10%	50%	30%	10%	0
ρfc	20%			20%			20%			20%			20%			0
RCR	RCR:Room Cavity Ratio						Ceiling Cavity Exitance Coefficients(CCEC)									
0.0	.196	.196	.196	.168	.168	.168	.114	.114	.114	.066	.066	.066	.021	.021	.021	
1.0	.187	.162	.139	.160	.139	.120	.109	.095	.083	.063	.055	.048	.020	.018	.016	
2.0	.179	.138	.103	.153	.118	.089	.105	.082	.062	.061	.048	.036	.019	.015	.012	
3.0	.171	.120	.079	.147	.104	.069	.101	.072	.048	.058	.042	.028	.019	.014	.009	
4.0	.163	.107	.064	.140	.092	.055	.096	.064	.039	.056	.038	.023	.018	.012	.008	
5.0	.156	.096	.053	.134	.083	.046	.092	.058	.032	.053	.034	.019	.017	.011	.006	
6.0	.149	.088	.045	.128	.076	.039	.088	.053	.027	.051	.031	.016	.017	.010	.005	
7.0	.142	.081	.039	.122	.070	.034	.084	.049	.024	.049	.029	.014	.016	.010	.005	
8.0	.135	.075	.034	.117	.065	.030	.081	.046	.021	.047	.027	.013	.015	.009	.004	
9.0	.129	.071	.031	.111	.061	.027	.077	.043	.019	.045	.025	.011	.015	.008	.004	
10.0	.124	.066	.028	.106	.058	.025	.074	.040	.017	.043	.024	.010	.014	.008	.003	

C Range: 0 - 360DEG
 C Interval: 22.5DEG
 Test Speed: HIGH
 Temperature:25.3DEG
 Operators:DAMIN
 Test Date:2017-03-29

γ Range: 0 - 180DEG
 γ Interval: 1.0DEG
 Test System:EVERFINE GO-2000B_V1 SYSTEM V2.0.351
 Humidity:65.0%
 Test Distance:9.660m [K=1.0000]
 Remarks:

UGR(Unified Glare Rating) Table

Test:U:24.00V I:0.3025A P:7.260W PF:0 Lamp Flux:526.489x1 lm										
NAME: 01-F0030-AWWN-041					TYPE:			WEIGHT:		
SPEC.:					DIM.:			SERIAL No.:		
MFR.: EVERFINE					SUR.:0.01*1.0*0.002			Shielding Angle:		
ceiling/cavity	0.7	0.7	0.5	0.5	0.3	0.7	0.7	0.5	0.5	0.3
walls	0.5	0.3	0.5	0.3	0.3	0.5	0.3	0.5	0.3	0.3
working plane	0.2	0.2	0.2	0.2	0.2	0.2	0.2	0.2	0.2	0.2
Room dimensions	Viewed crosswise					Viewed endwise				
x = 2H y = 2H	44.2	45.8	44.5	46.0	46.2	43.9	45.4	44.2	45.7	45.9
3H	45.8	47.2	46.1	47.5	47.7	45.4	46.8	45.7	47.1	47.3
4H	46.4	47.8	46.8	48.1	48.3	46.0	47.3	46.3	47.6	47.9
6H	46.9	48.2	47.3	48.5	48.8	46.4	47.7	46.7	48.0	48.3
8H	47.1	48.3	47.4	48.6	48.9	46.5	47.8	46.9	48.1	48.4
12H	47.2	48.3	47.5	48.7	49.0	46.6	47.8	47.0	48.1	48.4
4H 2H	44.8	46.1	45.1	46.4	46.7	44.6	45.9	44.9	46.2	46.4
3H	46.6	47.7	46.9	48.0	48.4	46.2	47.4	46.6	47.7	48.0
4H	47.3	48.4	47.7	48.7	49.1	46.9	48.0	47.3	48.4	48.7
6H	47.9	48.9	48.3	49.2	49.6	47.5	48.4	47.9	48.8	49.2
8H	48.1	49.0	48.6	49.4	49.8	47.7	48.6	48.1	48.9	49.3
12H	48.3	49.1	48.7	49.5	49.9	47.8	48.6	48.2	49.0	49.5
8H 4H	47.6	48.5	48.0	48.8	49.2	47.2	48.1	47.7	48.5	48.9
6H	48.3	49.1	48.8	49.5	49.9	47.9	48.7	48.4	49.1	49.5
8H	48.6	49.3	49.1	49.7	50.2	48.2	48.8	48.7	49.3	49.8
12H	48.8	49.4	49.3	49.9	50.4	48.4	49.0	48.9	49.4	49.9
12H 4H	47.6	48.4	48.0	48.8	49.2	47.2	48.1	47.7	48.5	48.9
6H	48.4	49.0	48.8	49.5	49.9	48.0	48.6	48.4	49.1	49.5
8H	48.7	49.3	49.2	49.7	50.2	48.3	48.9	48.8	49.3	49.8
Variations with the observer position at spacings:										
S = 1.0H	+ 0.1 / - 0.2					+ 0.2 / - 0.2				
1.5H	+ 0.2 / - 0.3					+ 0.2 / - 0.3				
2.0H	+ 0.2 / - 0.3					+ 0.2 / - 0.3				

CIE Pub.117 Corrected 526.5 lm Total Lamp Luminous Flux.(8log(F/F0) = -2.2)

C Range: 0 - 360DEG
 C Interval: 22.5DEG
 Test Speed: HIGH
 Temperature:25.3DEG
 Operators:DAMIN
 Test Date:2017-03-29

γ Range: 0 - 180DEG
 γ Interval: 1.0DEG
 Test System:EVERFINE GO-2000B_V1 SYSTEM V2.0.351
 Humidity:65.0%
 Test Distance:9.660m [K=1.0000]
 Remarks:

UTILIZATION FACTORS TABLE

Test:U:24.00V I:0.3025A P:7.260W PF:0 Lamp Flux:526.489x1 lm		
NAME: 01-F0030-AWWN-041	TYPE:	WEIGHT:
SPEC.:	DIM.:	SERIAL No.:
MFR.: EVERFINE	SUR.:0.01*1.0*0.002	Shielding Angle:

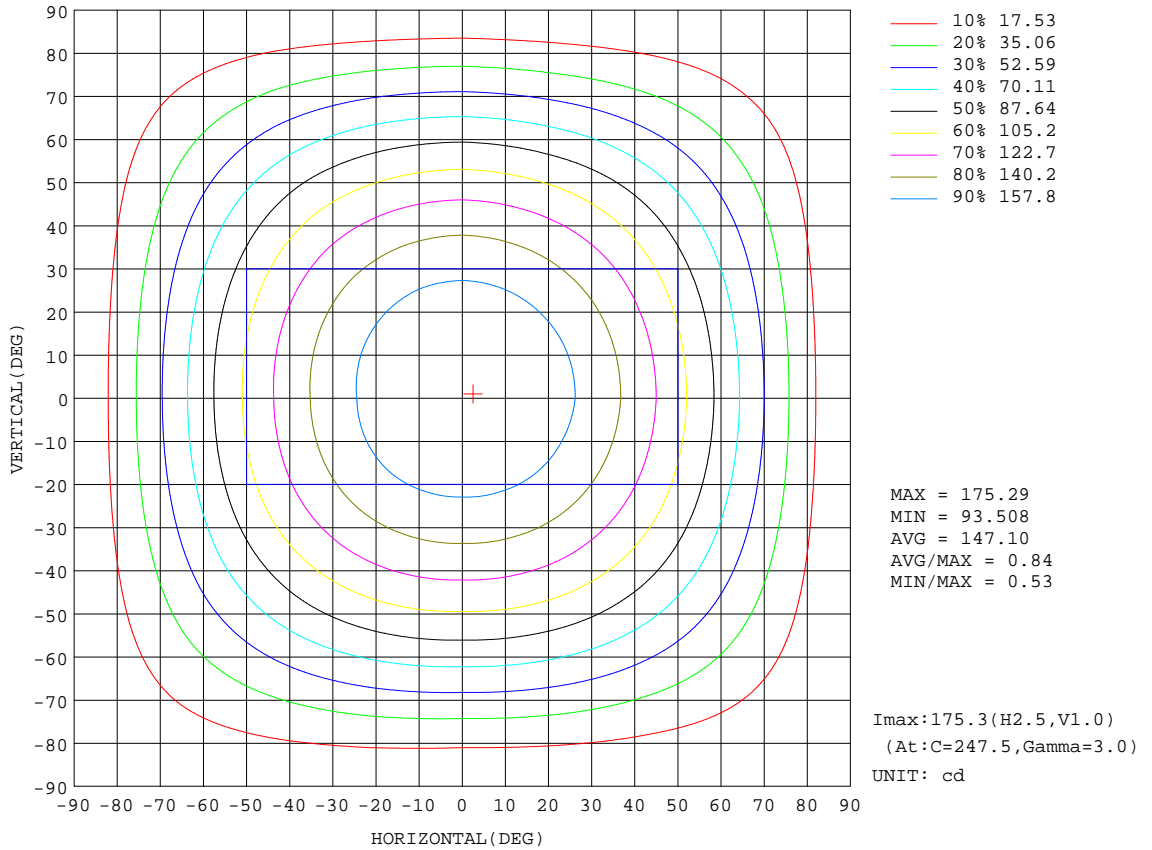
REFLECTANCE										
Ceiling	0.8	0.8	0.8	0.7	0.7	0.7	0.5	0.5	0.5	0
Walls	0.7	0.5	0.3	0.7	0.5	0.3	0.7	0.5	0.3	0
Working plane	0.2	0.2	0.2	0.2	0.2	0.2	0.2	0.2	0.2	0
ROOM INDEX	UTILIZATION FACTORS(PERCENT) $k(RI) \times RCR = 5$									
k = 0.60	57	45	38	56	45	38	55	44	37	31
0.80	67	55	47	65	54	47	64	53	47	40
1.00	75	64	56	74	63	56	71	64	55	48
1.25	82	71	64	81	71	64	78	69	63	55
1.50	87	77	70	85	76	69	82	74	68	60
2.00	94	85	79	92	84	78	89	82	76	68
2.50	98	90	84	96	89	83	92	86	81	72
3.00	101	94	89	99	93	88	95	90	85	77
4.00	106	100	95	103	98	93	99	94	91	81
5.00	108	103	99	106	101	97	101	97	94	85
ROOM INDEX	UF(total)									Direct
According to DIN EN 13032-2 2004			Suspended				SHRNOM = 1.25			

C Range: 0 - 360DEG
 C Interval: 22.5DEG
 Test Speed: HIGH
 Temperature:25.3DEG
 Operators:DAMIN
 Test Date:2017-03-29

γ Range: 0 - 180DEG
 γ Interval: 1.0DEG
 Test System:EVERFINE GO-2000B_V1 SYSTEM V2.0.351
 Humidity:65.0%
 Test Distance:9.660m [K=1.0000]
 Remarks:

ISOCANDELA DIAGRAM

Test:U:24.00V I:0.3025A P:7.260W PF:0 Lamp Flux:526.489x1 lm		
NAME: 01-F0030-AWWN-041	TYPE:	WEIGHT:
SPEC.:	DIM.:	SERIAL No.:
MFR.: EVERFINE	SUR.:0.01*1.0*0.002	Shielding Angle:

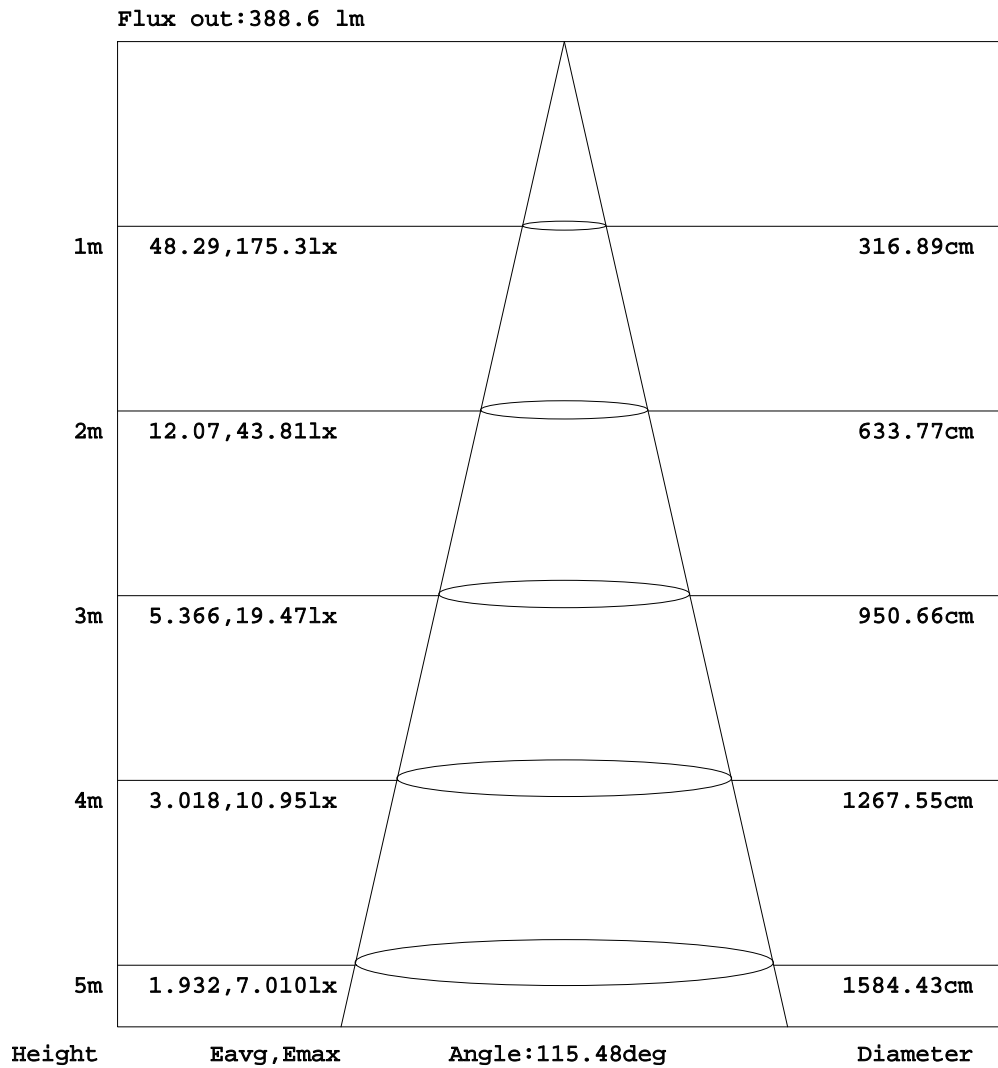


C Range: 0 - 360DEG
 C Interval: 22.5DEG
 Test Speed: HIGH
 Temperature:25.3DEG
 Operators:DAMIN
 Test Date:2017-03-29

γ Range: 0 - 180DEG
 γ Interval: 1.0DEG
 Test System:EVERFINE GO-2000B_V1 SYSTEM V2.0.351
 Humidity:65.0%
 Test Distance:9.660m [K=1.0000]
 Remarks:

AAI Figure

Test:U:24.00V I:0.3025A P:7.260W PF:0 Lamp Flux:526.489x1 lm		
NAME: 01-F0030-AWWN-041	TYPE:	WEIGHT:
SPEC.:	DIM.:	SERIAL No.:
MFR.: EVERFINE	SUR.:0.01*1.0*0.002	Shielding Angle:



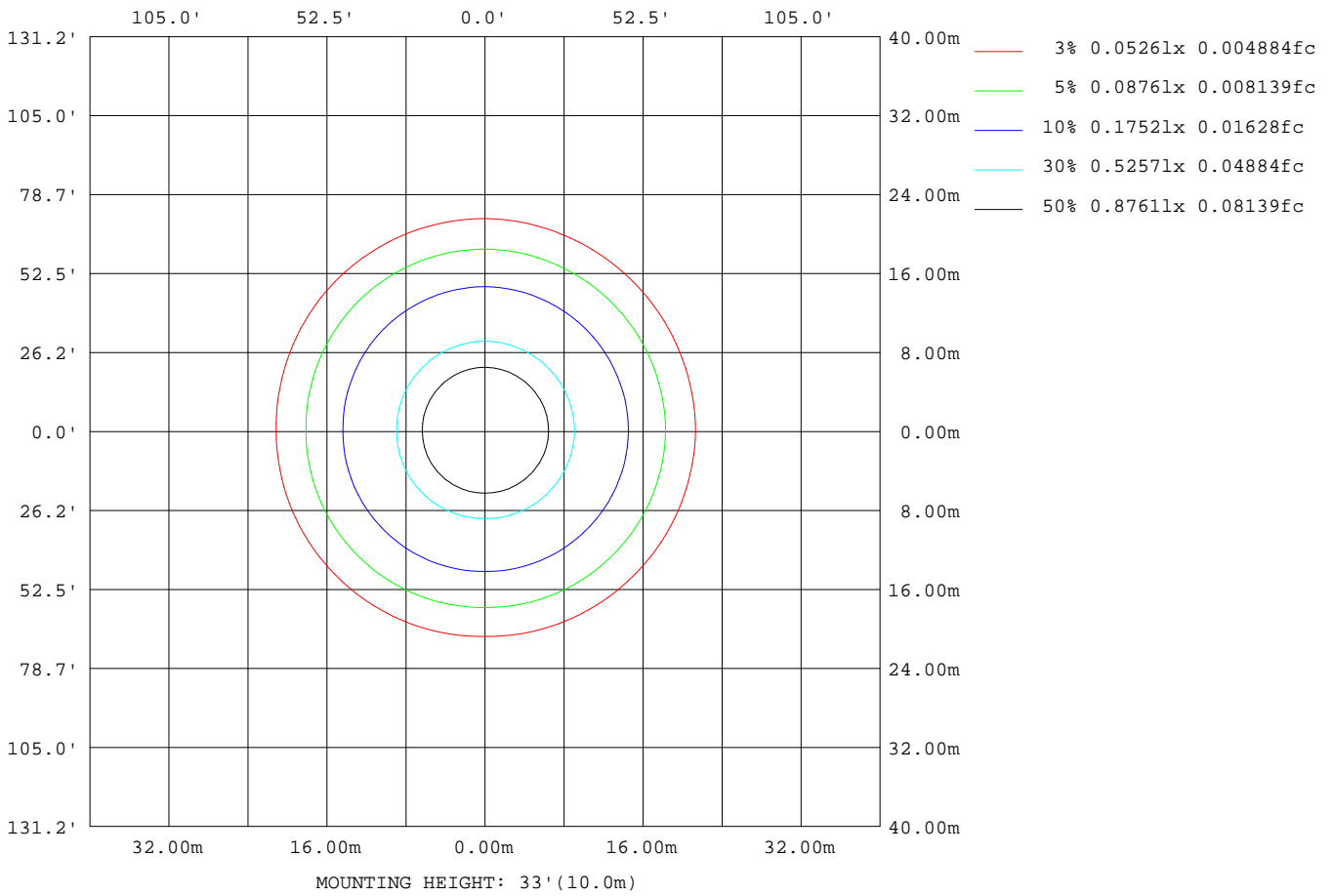
Note:The Curves indicate the illuminated area and the average illumination when the luminaire is at different distance.

C Range: 0 - 360DEG
 C Interval: 22.5DEG
 Test Speed: HIGH
 Temperature:25.3DEG
 Operators:DAMIN
 Test Date:2017-03-29

γ Range: 0 - 180DEG
 γ Interval: 1.0DEG
 Test System:EVERFINE GO-2000B_V1 SYSTEM V2.0.351
 Humidity:65.0%
 Test Distance:9.660m [K=1.0000]
 Remarks:

ISOLUX DIAGRAM

Test:U:24.00V I:0.3025A P:7.260W PF:0 Lamp Flux:526.489x1 lm		
NAME: 01-F0030-AWWN-041	TYPE:	WEIGHT:
SPEC.:	DIM.:	SERIAL No.:
MFR.: EVERFINE	SUR.:0.01*1.0*0.002	Shielding Angle:



C Range: 0 - 360DEG
 C Interval: 22.5DEG
 Test Speed: HIGH
 Temperature:25.3DEG
 Operators:DAMIN
 Test Date:2017-03-29

γ Range: 0 - 180DEG
 γ Interval: 1.0DEG
 Test System:EVERFINE GO-2000B_V1 SYSTEM V2.0.351
 Humidity:65.0%
 Test Distance:9.660m [K=1.0000]
 Remarks:

LED Avg.L Report

Test:U:24.00V I:0.3025A P:7.260W PF:0 Lamp Flux:526.489x1 lm		
NAME: 01-F0030-AWWN-041	TYPE:	WEIGHT:
SPEC.:	DIM.:	SERIAL No.:
MFR.: EVERFINE	SUR.:0.01*1.0*0.002	Shielding Angle:

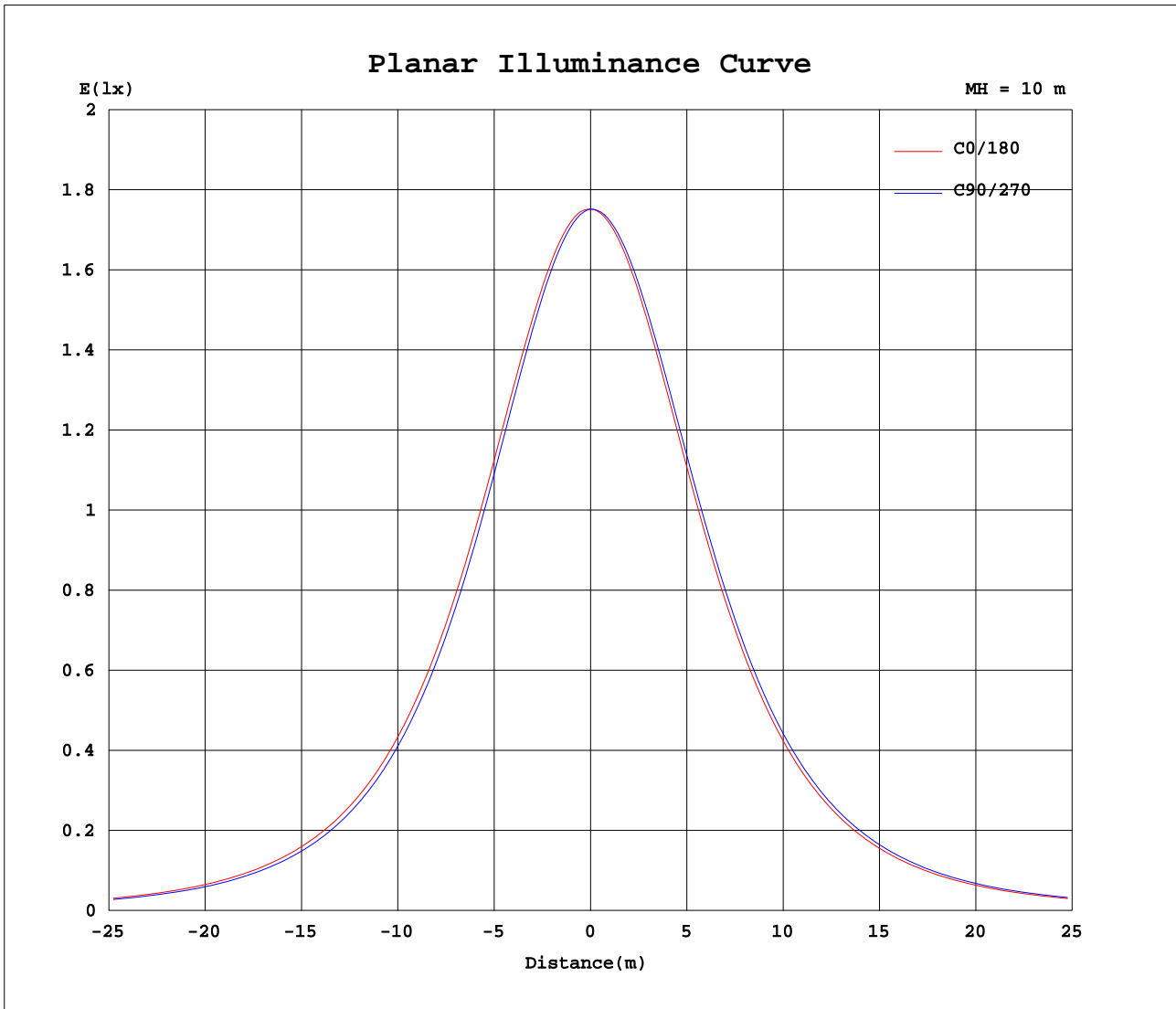
AvgL	cd/m2
L_0~180(65)av	7936835
L_0~180(75)av	7152086
L_0~180(85)av	5948991
L_90~270(65)av	7875235
L_90~270(75)av	7120794
L_90~270(85)av	6758245
L_45(65)av	7904430
L_45(75)av	7145631
L_45(85)av	6466983

Standard: GB/T 29293-2012

C Range: 0 - 360DEG
 C Interval: 22.5DEG
 Test Speed: HIGH
 Temperature:25.3DEG
 Operators:DAMIN
 Test Date:2017-03-29

γ Range: 0 - 180DEG
 γ Interval: 1.0DEG
 Test System:EVERFINE GO-2000B_V1 SYSTEM V2.0.351
 Humidity:65.0%
 Test Distance:9.660m [K=1.0000]
 Remarks:

Planar Illuminance Curve



C Range: 0 - 360DEG
 C Interval: 22.5DEG
 Test Speed: HIGH
 Temperature: 25.3DEG
 Operators: DAMIN
 Test Date: 2017-03-29

γ Range: 0 - 180DEG
 γ Interval: 1.0DEG
 Test System: EVERFINE GO-2000B_V1 SYSTEM V2.0.351
 Humidity: 65.0%
 Test Distance: 9.660m [K=1.0000]
 Remarks:

LUMINOUS DISTRIBUTION INTENSITY DATA

Test:U:24.00V I:0.3025A P:7.260W PF:0 Lamp Flux:526.489x1 lm		
NAME: 01-F0030-AWWN-041	TYPE:	WEIGHT:
SPEC.:	DIM.:	SERIAL No.:
MFR.: EVERFINE	SUR.:0.01*1.0*0.002	Shielding Angle:

Table--1

UNIT: cd

C(DEG) γ (DEG)	0	22.5	45	67.5	90	112.5	135	157.5	180	202.5	225	247.5	270	292.5	315	337.5			
0	175	175	175	175	175	175	175	175	175	175	175	175	175	175	175	175			
5	175	174	174	174	174	174	174	174	174	175	175	175	175	175	175	175			
10	173	172	172	171	171	171	172	172	172	173	173	174	174	174	173	173			
15	170	169	168	167	167	167	168	168	168	169	170	171	171	171	170	170			
20	165	164	163	162	161	162	163	163	163	165	165	166	166	166	166	165			
25	159	158	157	155	155	155	156	157	157	158	160	161	161	161	160	160			
30	152	150	149	148	147	147	148	149	149	151	152	153	154	153	153	152			
35	143	142	140	139	138	138	139	140	141	142	144	145	145	145	144	144			
40	134	132	130	128	127	128	129	130	131	133	134	135	136	135	134	134			
45	123	121	119	117	116	117	118	119	120	122	124	124	125	124	123	123			
50	110	108	106	105	104	105	106	107	108	110	112	113	113	112	111	111			
55	97.1	95.2	93.0	91.6	90.6	91.8	92.9	94.0	94.6	96.7	98.6	99.4	99.9	98.5	97.8	97.2			
60	82.9	81.1	79.0	77.6	76.6	77.9	79.1	80.2	80.7	82.9	84.7	85.5	85.8	84.4	83.5	82.9			
65	68.0	66.1	64.2	63.1	62.1	63.5	64.7	65.7	66.2	68.2	70.0	70.8	71.0	69.4	68.4	67.8			
70	52.6	50.9	49.2	48.3	47.5	48.9	50.0	50.9	51.2	53.2	54.9	55.7	55.9	54.3	53.1	52.5			
75	37.4	36.0	34.5	33.9	32.9	34.7	35.6	36.5	36.7	38.2	40.0	40.5	40.8	39.0	37.9	37.2			
80	22.8	21.8	20.7	20.5	19.6	21.4	22.3	22.9	22.7	24.3	25.8	26.1	26.5	24.8	23.7	22.8			
85	10.3	9.70	9.27	9.47	9.44	10.6	11.2	11.3	10.4	11.7	12.9	13.4	14.1	12.9	11.7	10.4			
90	1.60	2.21	2.54	2.86	3.38	3.72	3.99	3.17	1.59	2.88	3.69	4.42	4.95	4.31	3.59	2.97			
95	0.18	0.76	0.81	0.65	1.17	1.26	1.16	0.62	0.20	0.56	0.45	0.59	0.62	0.85	0.82	0.93			
100	0.18	0.41	0.41	0.38	0.35	0.38	0.37	0.32	0.26	0.24	0.30	0.35	0.24	0.33	0.30	0.34			
105	0.23	0.35	0.33	0.38	0.32	0.36	0.35	0.38	0.33	0.24	0.33	0.32	0.29	0.27	0.30	0.26			
110	0.26	0.43	0.33	0.41	0.32	0.41	0.35	0.43	0.38	0.24	0.35	0.32	0.35	0.27	0.35	0.26			
115	0.33	0.49	0.36	0.49	0.35	0.47	0.36	0.49	0.46	0.32	0.41	0.32	0.39	0.27	0.39	0.26			
120	0.47	0.53	0.45	0.53	0.46	0.53	0.47	0.55	0.52	0.42	0.47	0.35	0.43	0.32	0.47	0.33			
125	0.47	0.58	0.47	0.58	0.50	0.58	0.49	0.64	0.59	0.47	0.53	0.44	0.50	0.40	0.52	0.44			
130	0.52	0.64	0.52	0.64	0.53	0.64	0.52	0.67	0.65	0.49	0.61	0.47	0.56	0.49	0.58	0.47			
135	0.56	0.68	0.55	0.68	0.56	0.70	0.56	0.71	0.68	0.55	0.65	0.49	0.61	0.50	0.62	0.50			
140	0.58	0.73	0.59	0.71	0.62	0.74	0.64	0.73	0.71	0.56	0.70	0.55	0.64	0.53	0.65	0.55			
145	0.67	0.76	0.67	0.77	0.67	0.79	0.68	0.79	0.76	0.67	0.71	0.59	0.71	0.58	0.71	0.58			
150	0.73	0.79	0.68	0.82	0.71	0.82	0.71	0.83	0.82	0.68	0.77	0.67	0.74	0.62	0.74	0.64			
155	0.71	0.82	0.71	0.83	0.71	0.84	0.71	0.83	0.85	0.74	0.79	0.68	0.77	0.68	0.79	0.70			
160	0.73	0.85	0.73	0.79	0.74	0.84	0.76	0.83	0.85	0.73	0.84	0.71	0.83	0.71	0.85	0.73			
165	0.76	0.85	0.76	0.79	0.80	0.84	0.79	0.83	0.85	0.74	0.85	0.76	0.88	0.73	0.85	0.76			
170	0.79	0.85	0.79	0.79	0.79	0.84	0.79	0.83	0.85	0.79	0.85	0.77	0.88	0.77	0.88	0.76			
175	0.80	0.85	0.79	0.85	0.90	0.84	0.80	0.83	0.85	0.80	0.85	0.80	0.90	0.79	0.88	0.79			
180	0.82	0.85	0.91	0.90	0.90	0.91	0.82	0.83	0.83	0.82	0.82	0.82	0.91	0.84	0.88	0.82			

C Range: 0 - 360DEG
 C Interval: 22.5DEG
 Test Speed: HIGH
 Temperature:25.3DEG
 Operators:DAMIN
 Test Date:2017-03-29

γ Range: 0 - 180DEG
 γ Interval: 1.0DEG
 Test System:EVERFINE GO-2000B_V1 SYSTEM V2.0.351
 Humidity:65.0%
 Test Distance:9.660m [K=1.0000]
 Remarks: